



Here's the Scoop on the



IB Primary Years Programme



Attributes of the IB Learner Profile

Principled: I am honest, fair, respectful, and responsible.

Caring: I show sensitivity towards the needs and feelings of others.

Open-Minded: I appreciate my culture and the views, values, and traditions of others.

Communicators: I share and receive ideas and information in more than one way.

Balanced: I take care of my mind, body, and feelings.

Reflective: I think about my strengths, my weaknesses and my own learning.

Risk-Taker: I am brave and courageous. I explore new roles, ideas, and strategies.

Inquirer: I am curious. I ask questions. I love to learn.

Thinker: I think critically and creatively to make decisions and to solve problems.

Knowledgeable: I explore ideas and concepts. I know about the world near and far.

Approaches to Learning

The approaches to learning are skills designed to enable students to "learn how to learn."

Social Skills

The ability to participate and collaborate with others while showing awareness and respect for other cultures, varying points of view, and individual differences.

Research Skills

The ability to determine the information needed, locate and access information, organize and evaluate information, and use and share information effectively, efficiently, and ethically.

Thinking Skills

The ability to creatively and critically analyze, apply, evaluate, synthesize, conceptualize, reason, and solve problems.

Communication Skills

The ability to produce and interpret messages effectively.

Self-Management Skills

The ability to set goals, manage time and tasks effectively, and manage your state of mind, self-motivation, resilience, and mindfulness.

Units of Inquiry

These themes are the way we sort out standards to be cross-curricular and make conceptual connections.

Who We Are
How the World Works
Sharing the Planet
How We Express Ourselves
Where We are in Place and Time
How We Organize Ourselves

Taking Action & Student Agency

The IB program encourages students to become leaders of their own learning. Student agency is the capacity to set a goal, reflect and act responsibly to effect change.

Key Concepts

The IB key concepts create cross-curricular connections and help generate questions for student inquiry.

Form: What is it like?

Change: How is it changing?

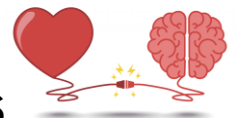
Function: How does it work?

Causation: Why is it like this?

Perspective: What is the point of view?

Connection: How is it connected to other things?

Responsibility: What is our responsibility?



Transdisciplinary Unit of Inquiry Themes

James B. Sanderlin IB World School is committed to teaching and learning with the brain and heart in mind. Our diverse community of lifelong learners will use an inquiry approach through our challenging programmes to become internationally-minded, lifelong learners.

Who We Are

An inquiry into the nature of the self; beliefs and values; personal, physical, mental, social and spiritual health; human relationships including families, friends, communities and cultures; rights and responsibilities; what it means to be human

How we Express Ourselves

An inquiry into the ways in which we discover and express ideas, feelings, nature, culture, beliefs and values; the ways in which we reflect on, extend and enjoy our creativity; our appreciation of the aesthetic.

Where we are in Place and Time

An inquiry into orientation in place and time; personal histories; homes and journeys; the discoveries, explorations and migrations of humankind; the relationships between, and the interconnectedness of, individuals and civilizations from local and global perspectives.

How the World Works

An inquiry into the natural world and its laws; the interaction between the natural world (physical and biological) and human societies; how humans use their understanding of scientific principles; the impact of scientific and technological advances on society and on the environment.

How we Organize Ourselves

An inquiry into the interconnectedness of human-made systems and communities; the structure and function of organizations; societal decision-making; economic activities and their impact on humankind and the environment.

Sharing the Planet

An inquiry into rights and responsibilities in the struggle to share finite resources with other people and with other living things; communities and the relationships within and between them; access to equal opportunities; peace and conflict resolution.